



## Capital Access Program

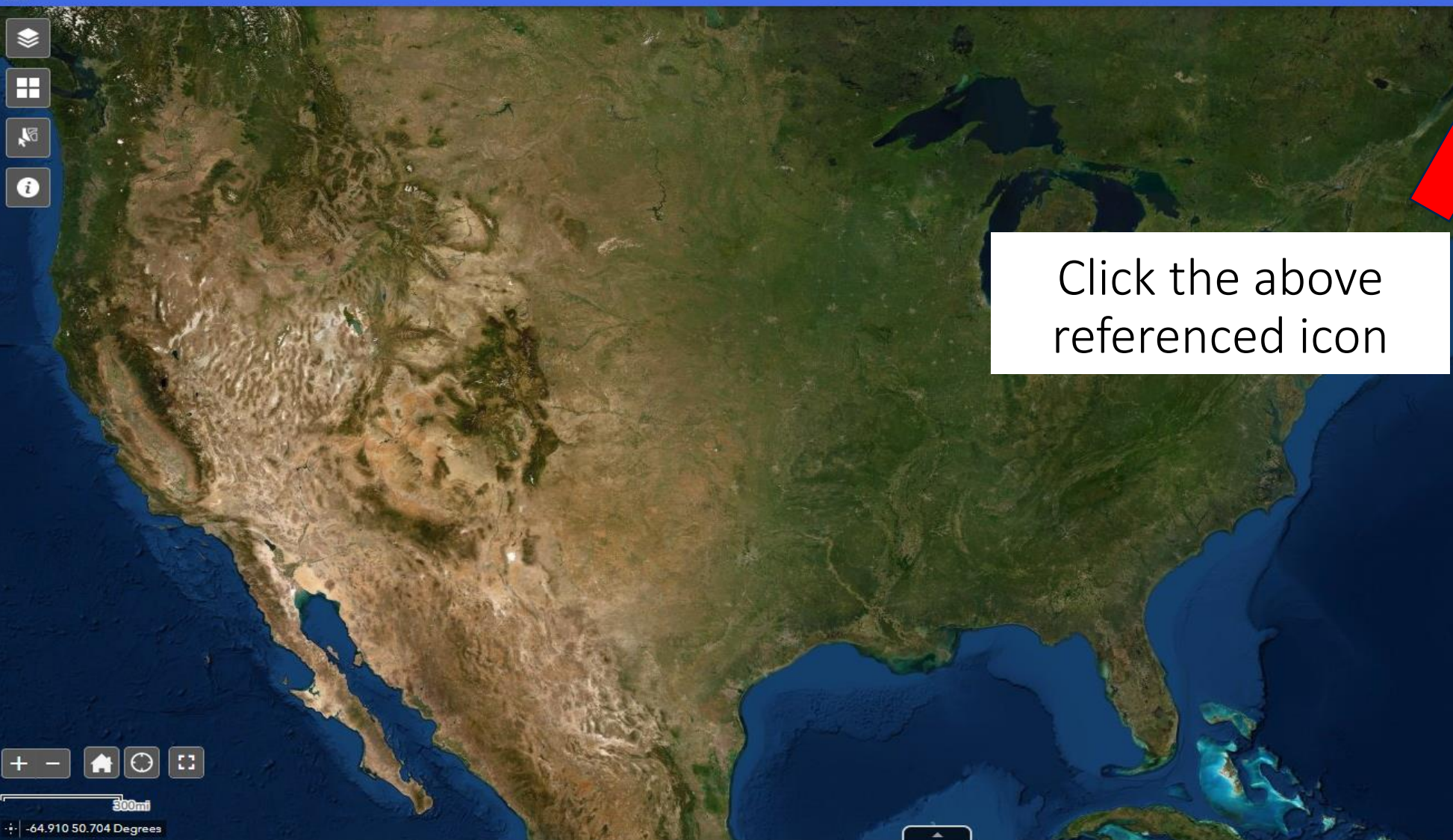
***“How Do I know I am in a Low to Moderate Income Area”***



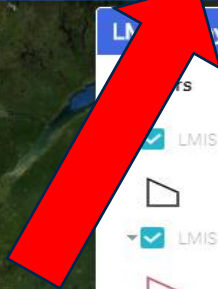


**Copy and Paste the Link Below to be Taken To the  
“CDBG Low Moderate Income Area Data ACS”**

**<https://hud.maps.arcgis.com/apps/webappviewer/index.html?id=ffd0597e8af24f88b501b7e7f326bedd>**



Click the above referenced icon



Step 1. SEARCH TO ZOOM IN

Layers

- LMISD by Block Group
- LMISD by Place & Consolidated City
- LMISD by County Subdivision
- LMISD by County



LMISD Layers

Layers

- LMISD by Block Group
- LMISD by Place & Consolidated City
- LMISD by County Subdivision
- LMISD by County



Be Sure the "LMISD by Block Group" box is checked





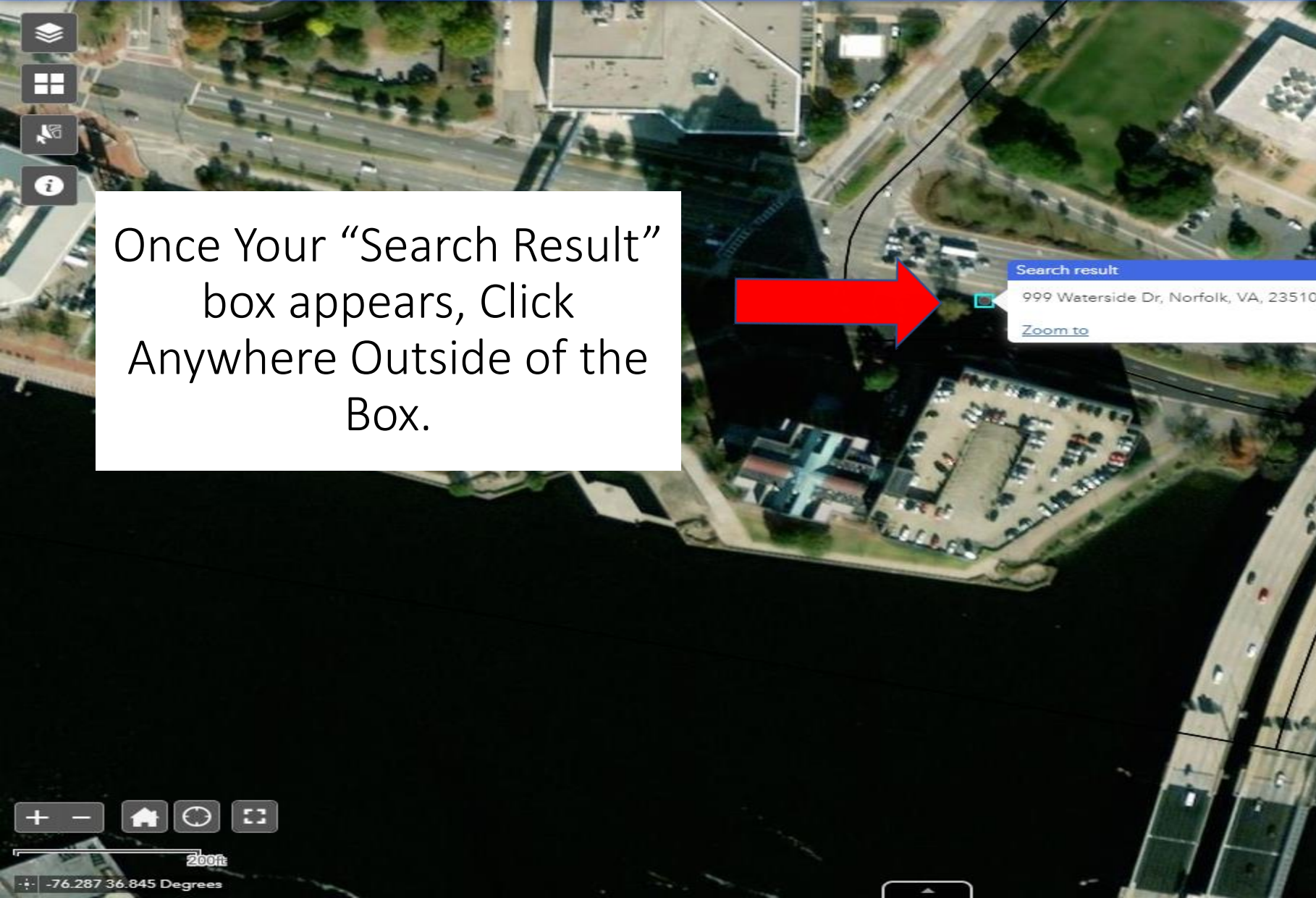
LMISD

Layer

- LMISD by Block Group
- LMISD by Place & Consolidated City
- LMISD by County Subdivision
- LMISD by County

Input the  
Property  
Address Here

Low- and Moderate-Income Area Data, based on 2011-2015 ACS



Once Your "Search Result" box appears, Click Anywhere Outside of the Box.

999 Waterside Dr, Norfolk, VA, 2: X

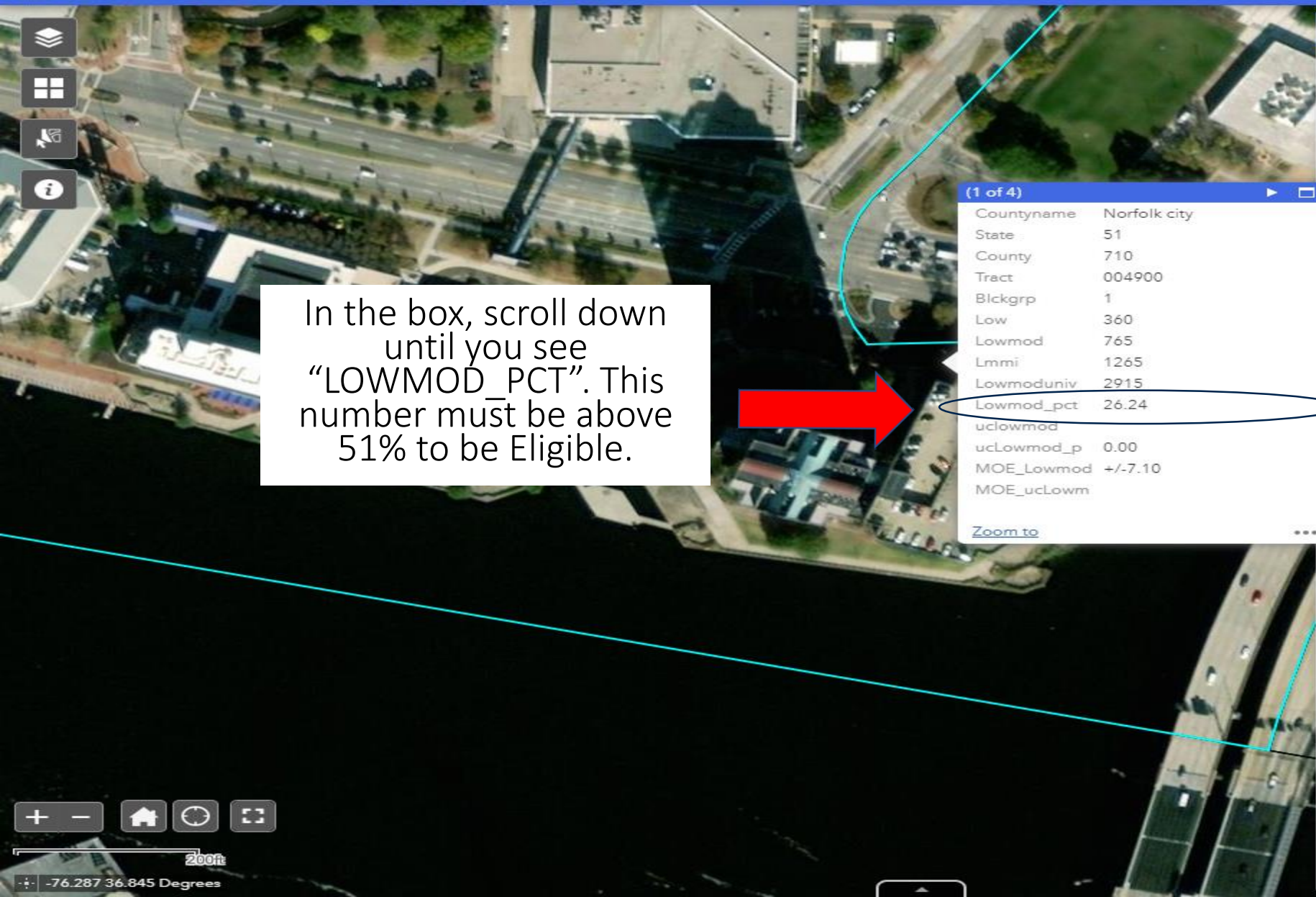
999 Waterside Dr, Norfolk, VA, 23510, USA

LMISD Lay

Layers

- LMISD by Block Group
- LMISD by Place & Consolidated City
- LMISD by County Subdivision
- LMISD by County

Low- and Moderate-Income Area Data, based on 2011-2015 ACS



In the box, scroll down until you see "LOWMOD\_PCT". This number must be above 51% to be Eligible.

(1 of 4)

Countyname	Norfolk city
State	51
County	710
Tract	004900
Blckgrp	1
Low	360
Lowmod	765
Lmmi	1265
Lowmoduniv	2915
Lowmod_pct	26.24
ucLowmod	
ucLowmod_p	0.00
MOE_Lowmod	+/-7.10
MOE_ucLowm	

[Zoom to](#)

999 Waterside Dr, Norfolk, VA, 2: X

Show search results for 999 Watersid...

### LMISD Layers

Layers

- LMISD by Block Group
- LMISD by Place & Consolidated City
- LMISD by County Subdivision
- LMISD by County